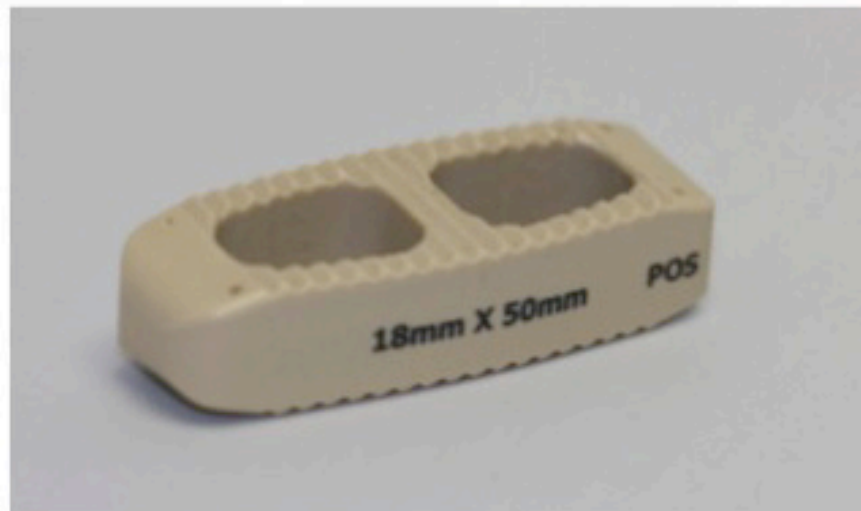
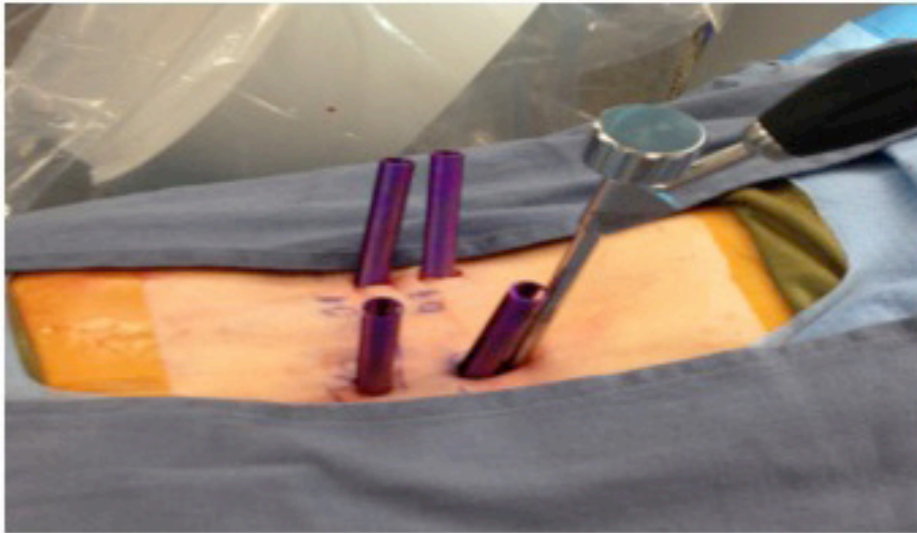


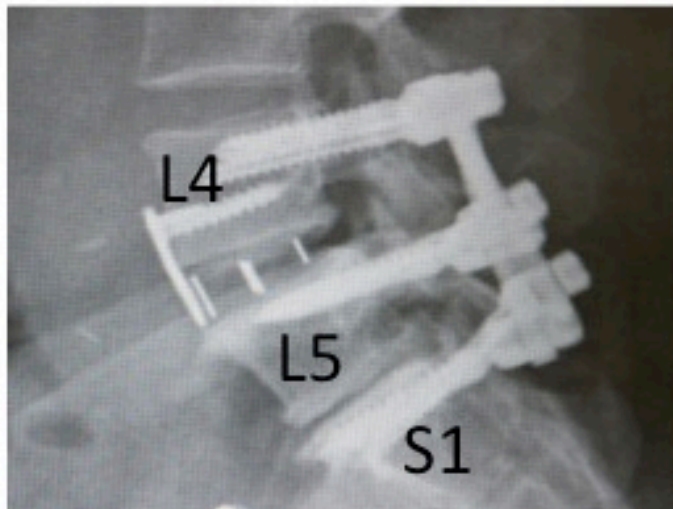
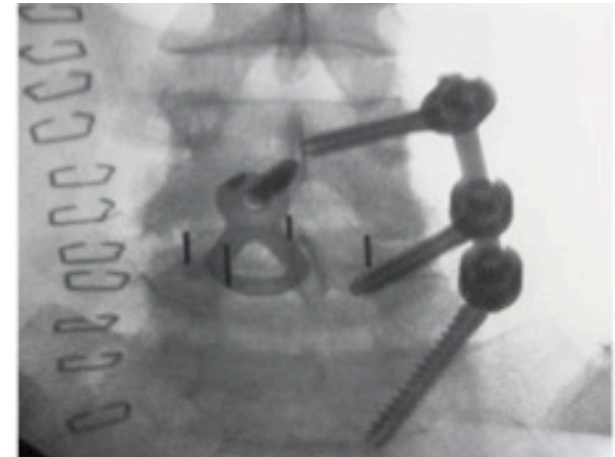
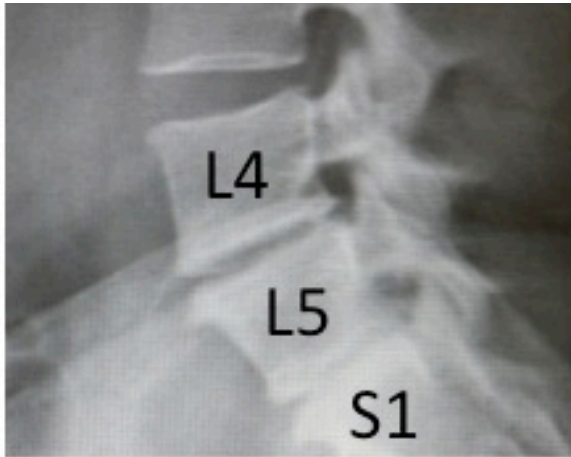
# MIS Case 1

Elderly with DDD & Stenosis L3/4



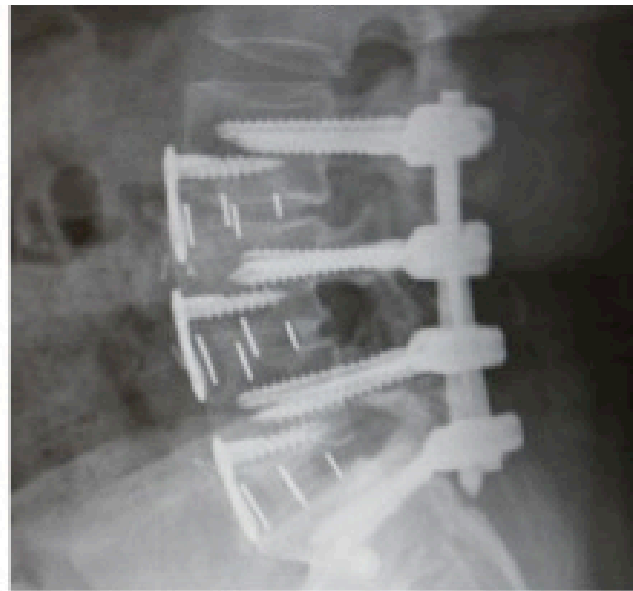
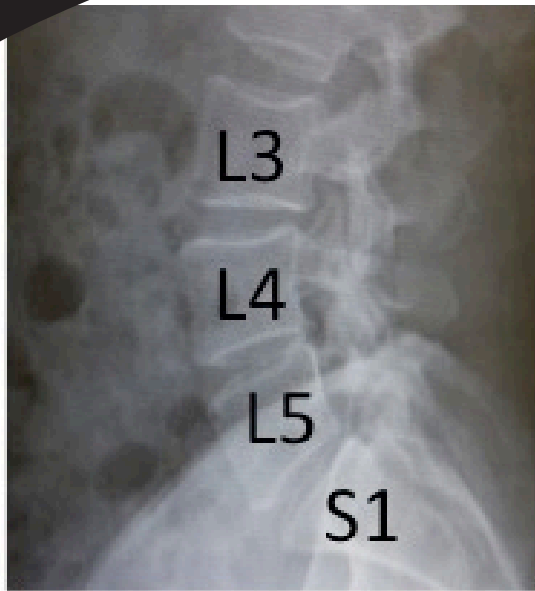
# MIS Case 2

41 y/o Unilateral Radiculopathy & L4/S1 DDD  
MIS on the Right, Open on Left



# MIS Case 3

53 y/o Unilateral Radiculopathy & L3/S1 DDD  
MIS on the Left, Open on Right



# MIS Case 4

63 y/o L3/4 Unilateral Spondylosis

