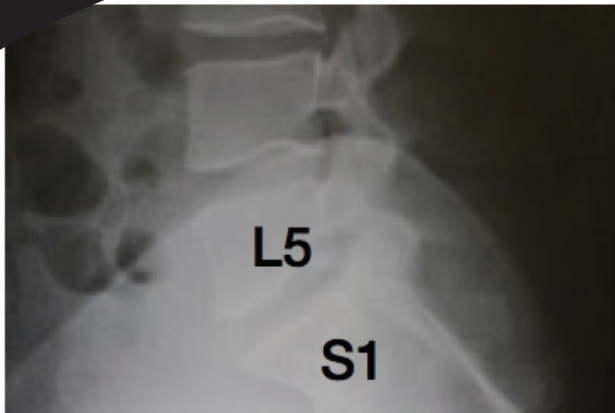
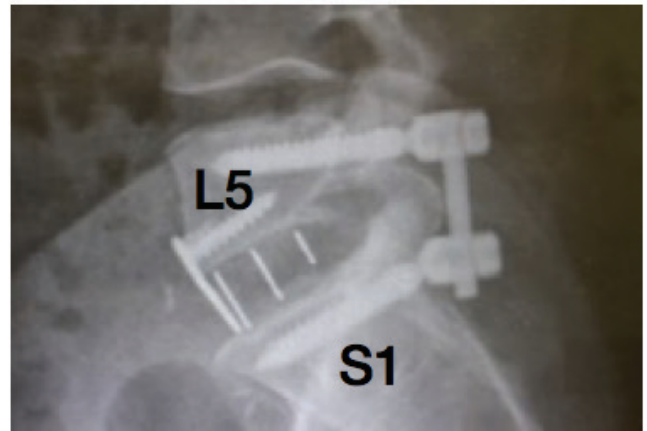


1 Level: Unilateral 360 L5/S1 Diamondback® Pedicle Screw System & Fang Plate®

40 y/o WF with DDD and Recurrent Disk Herniation



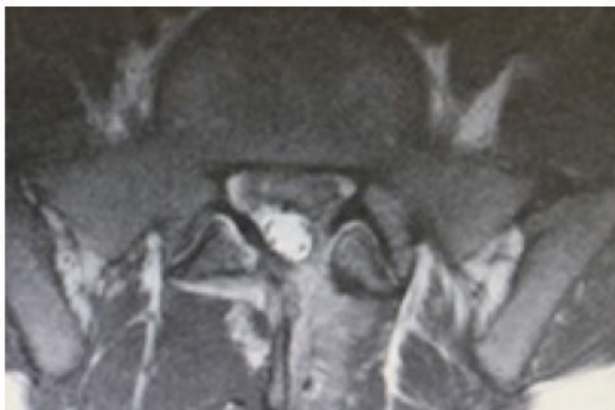
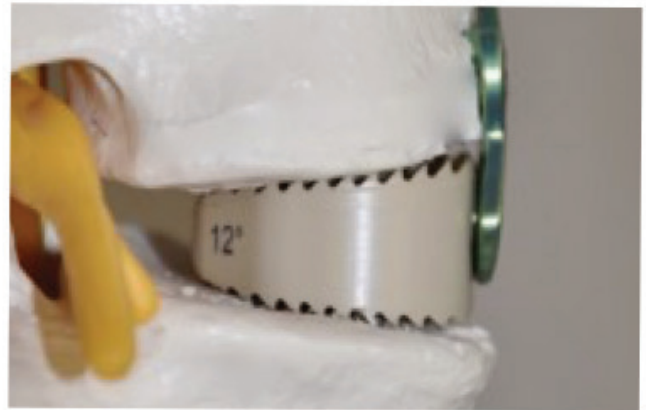
Pre-Op



Post-Op



Pre-Op



Pre-Op

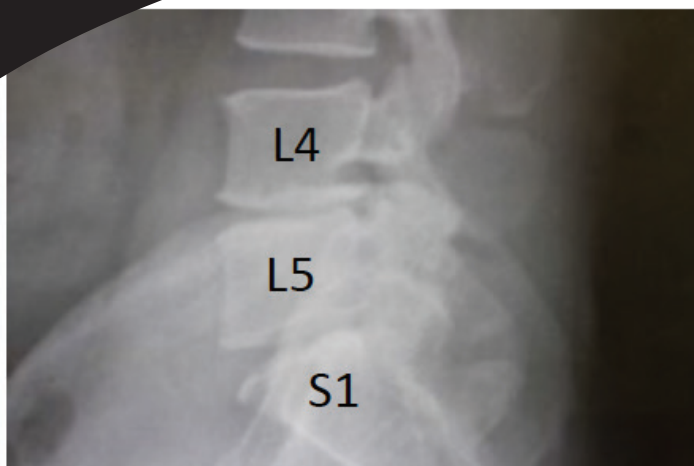


Post-Op

2 Level: L4/5, L5/S1

Diamondback® Pedicle Screw System

41 y/o WM with DDD and Post-Laminectomy Syndrome



Pre-Op



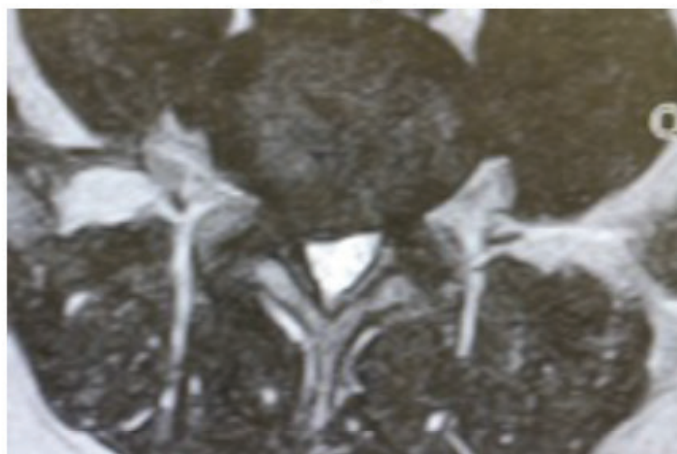
Post-Op



Pre-Op



Post-Op

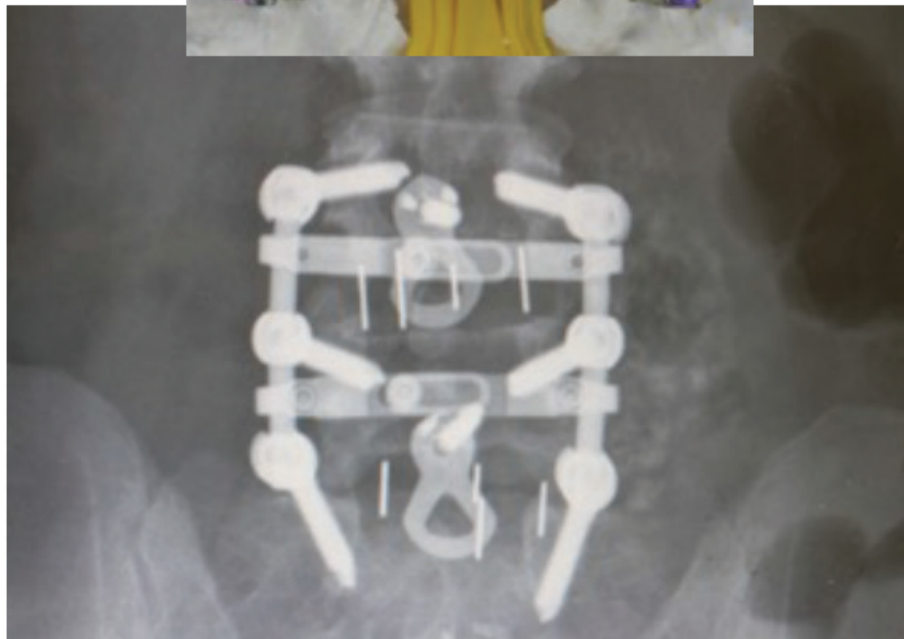
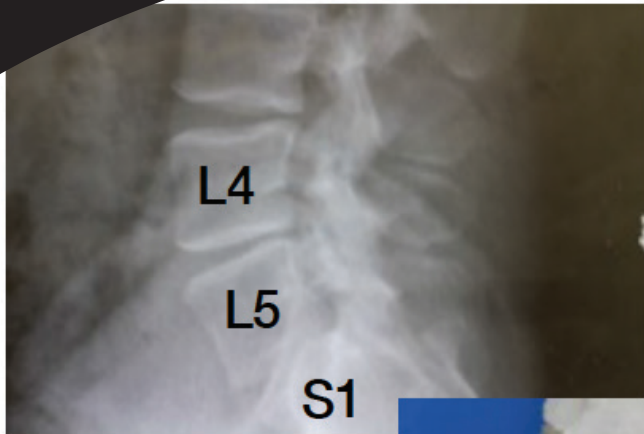


Pre-Op



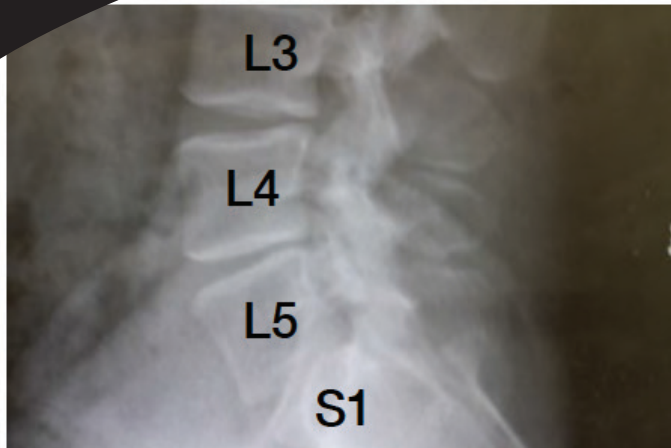
2 Level: L4/L5, L5/S1 360 Fusion Diamondback® Pedicle Screw System & Boa Constrictor® Cross-Link

45 y/o WF with DDD and Diskogenic Pain

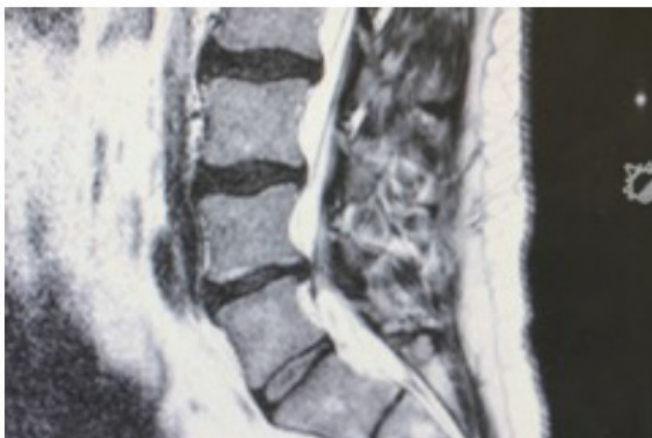


2 Level: L3/L4, L4/L5 360 Fusion Diamondback® Pedicle Screw System & Boa Constrictor® Cross-Link

48 y/o WM with DDD and Diskogenic Pain



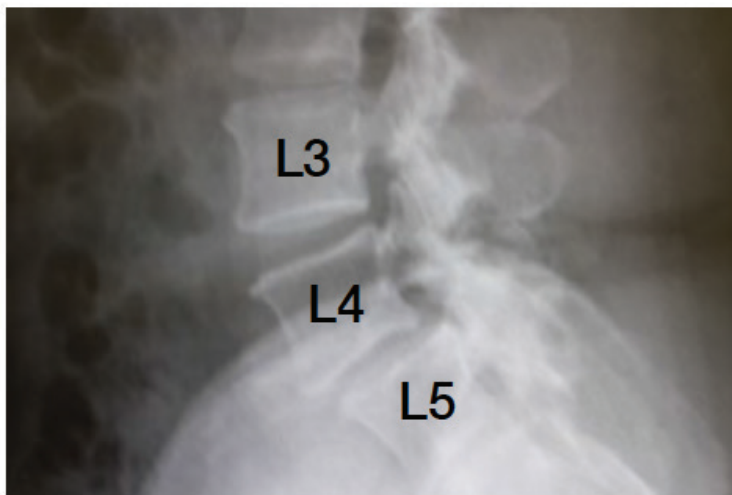
Fang Plate placed per vascular anatomy



2 Level: L3/L4, L5/S1 360

Diamondback® Pedicle Screw System & Boa Constrictor® Cross-Link

55 y/o WF with DDD and Spondylolithesis



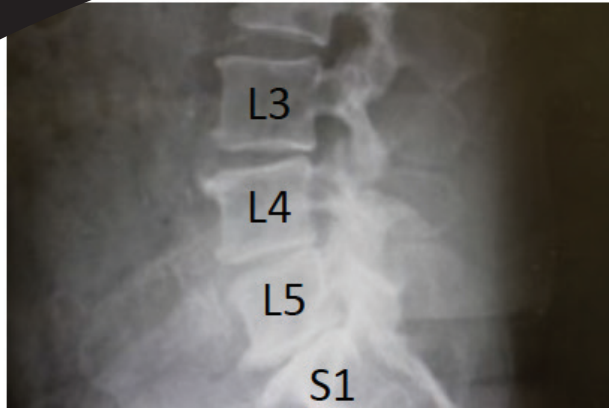
Pre-Op → Post-Op



3 Level: L3/L4, L4/L5, L5/S1

Diamondback® Pedicle Screw System & Boa Constrictor® Cross-Link

48 y/o WM with Multi-Level Lumbar Stenosis



3 Level: L3/L4, L4/L5, L5/S1

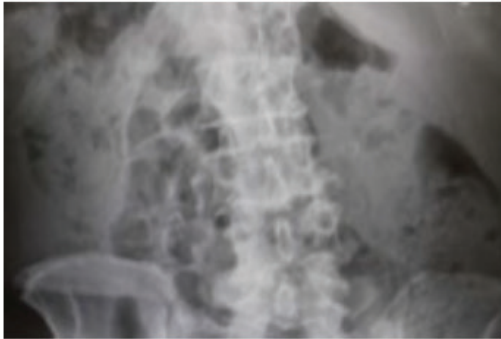
Diamondback® Pedicle Screw System & Boa Constrictor® Cross-Link

67 y/o WM with DDD & Stenosis



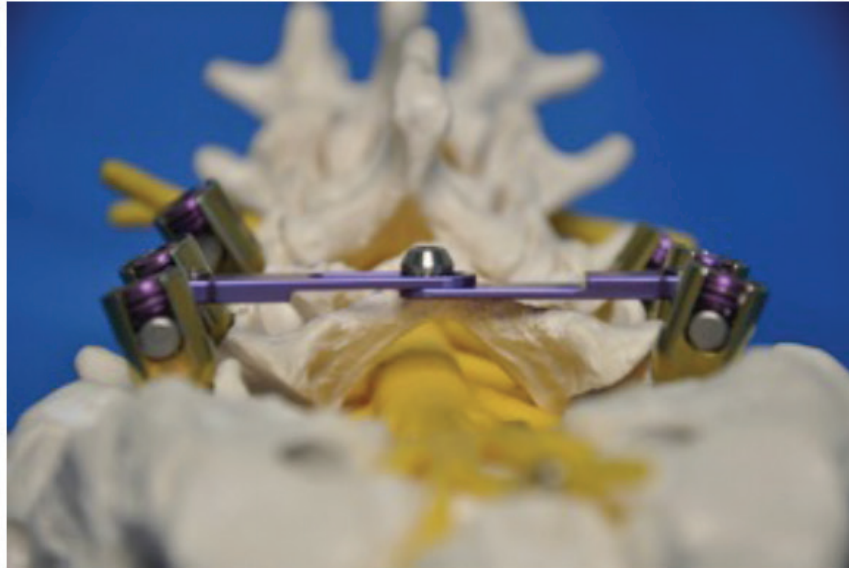
4 Level: L2/L3, L3/L4, L4/L5, L5/S1 Diamondback® Pedicle Screw System & Boa Constrictor® Cross-Link

71 y/o with DDD & Multi-Level Stenosis



5 Level: L1/L2, L2/L3, L3/L4, L4/L5, L5/S1 Diamondback® Pedicle Screw System & Boa Constrictor® Cross-Link

72 y/o WM with DDD and Multi-Level Stenosis



Lumbar Revision: L1/L2, L2/L3, L3/L4, L4/L5, L5/S1, S1/S2

Diamondback® Pedicle Screw System & Boa Constrictor® Cross-Link

75 y/o with DDD & Post-Laminectomy Syndrome



Luque rectangle

